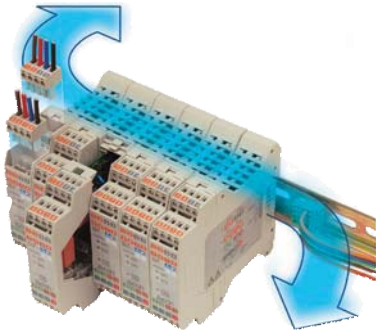


Panel Mount Controllers, Indicators, and Alarm Units



- 1/32, 1/16, 1/8, 1/4 DIN
- Single and Dual Loop with many options
- Auto-tune Heat/Cool with Fan, Water, and Oil Cooling
- Temperature, Pressure, Flow, Level, Ratio, Cascade, . . .
- Set point controller and Ramp/Soak programmers
- Universal appearance and programming
- PC configurable for rapid setup, file saving, and file email
- ModBus and ProfiBus communications
- FM alarm units with front panel and remote reset
- 3 year warranty with CE, UL/cUL Approvals

DIN Rail Mount Controllers and Acquisition Modules



- Single and Dual Loop Control and Data Acquisition
- Auto-tune Heat/Cool with Fan, Water, and Oil Cooling
- ModBus RTU serial communication included standard
- Universal Inputs and Outputs plus customized inputs
- PC configurable for rapid setup, file saving, and file email
- Fieldbus Integration via ModBus, ProfiBus, DeviceNet, Ethernet
- Easy integration with PLCs or stand-alone data acquisition
- 3 year warranty with CE, UL/cUL Approvals

Programmable Automation Controllers and Operator Touch Panels

PAC

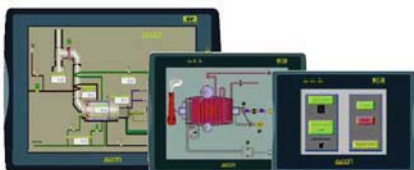
- Advanced auto-tuning PID with set point programmer and Heat/Cool control
- Complete Logic and Sequence control
- Open connectivity to major fieldbus systems
- Universal IEC 61131 programming (OpenPCS Ascon Edition) using Function Block, Ladder Diagram, Structured Text, Sequential Function Chart, Continuous Function Chart, and Instruction List Languages for complete ease of application development
- Compact and modular distributed IO with cost effective expansion options
- Ethernet and serial communication standards
- 3 year warranty with CE, UL/cUL Approvals

microPAC

- Same features as SigmaPAC w/onboard analog + digital IO
- Add up to two expansion IO modules for 8 analog in, 4 analog out, 40 digital in, and 40 digital out
- Integrate with Modbus serial devices
- 3 year warranty with CE, UL/cUL Approvals

Operator Touch Panels

- Available in 4", 6", 8", 10", and 12" Sizes and up to 65k color
- Available with Serial Ports, Ethernet, and USB Ports
- CE, UL/cUL Approvals



Multi-Function Programmable Process Controller



- Multi-loop PID controller / microPLC / Process Computer in one instrument- from single loop to mini DCS
- Up to 4 loops with 8 AI, 8 AO, 32 DI, and 32 DO
- Easy to use high resolution graphical display with interactive menu, bargraphs, trends, and process detail screens
- Freely programmable with easy to use Function Block software
- ModBus serial communications and Peer-to-Peer LAN option
- Up to 4 set point programmer option with real-time clock
- 3 year warranty with CE, UL/cUL Approvals

Humidity & Temperature Electronic Transmitters



- Highly accurate field replaceable capacitive "Humi-Chip" sensor without the need for recalibration
- Dual analog outputs of humidity and temperature
- Wall, duct, and remote mounting configurations
- Optional LCD display real-time clock, alarms, and ModBus serial communications
- Dew Point and Differential Temperature calculation
- Remote cable length up to 10 feet (30m)
- 3 year warranty with CE, UL/cUL Approvals

SCR Power Controllers, Actuators, and Temperature Transmitters

Power Controllers



- All models are self contained and internally fused and meet UL508A Approval (SCCR: Short Circuit Current Ratings)
- Ranges from 120V/16A loads to 690V/2900A loads in single, two and three phase models
- Soft start, current limiting, analog outputs, relay fault output, fuse fail indication, and load monitoring models
- Available with ModBus, DeviceNet, Profibus, CanOpen serial and fiber optic communication options
- Suitable for high coefficient loads (KANTHAL elements) and ASM mode to synchronize multiple TH Series devices
- Fully configurable for zero cross, half wave, and phase angle operation in resistive and transformer coupled loads

Actuators



- IP54 rugged design in low and medium torque bi-directional models
- Contact closure input and analog input positioning
- Adjustable auxilliary limit switches
- Optional internal Auto/Manual positioning
- Universal input, split range, and shaft rotation direction electronic board for single model use in all applications

Temperature Transmitters



- Most commonly accepted inputs in 2 and 3 wire with adjustable 2 wire current output signal
- Available in head mount and DIN rail mount models
- Models available for use in hazardous locations